



Part # 42005
2007 Jeep JK (4 door only)
2" front / 1" rear spacer kit

Parts list:

<u>Part #</u>	<u>Description</u>	<u>Qty.</u>
42005-01	Front coil spring spacers	2
42005-02	Rear coil spring spacers	2
42005INST	Instruction manual (customer)	1
42005INST	Instruction manual (installer)	1
MIRRORHANGER	Rear view mirror hanger	1
WARNINGDECAL	Warning decal	1

Congratulations on your selection to purchase a Tuff Country EZ-Ride Suspension System. We at Tuff Country are proud to offer a high quality product at the industries most competitive pricing. Thank you for your confidence in us, and our product.

This spacer kit is designed to fit on the Jeep JK with a hard top or a soft top.

Before installation begins, it is the customers/installers responsibility to make sure that all parts are on hand. If any parts are missing, please feel free to call one of our customer service representatives @ (801) 280-2777.

Tuff Country EZ-Ride Suspension packages (2) sets of instruction sheets with this box kit. (1) is for the installer and (1) is for the customer. The (1) for the customer has some post installation procedure literature and it is the installers responsibility to make sure that the customer receives a copy of the installation manual along with the literature.

Torque settings:

5/16"	15—18 ft lbs.
3/8"	28—32 ft lbs.
7/16"	30—35 ft lbs.
1/2"	65—85 ft lbs.
9/16"	85—120 ft lbs.
5/8"	95—130 ft lbs.
3/4"	100—140 ft lbs.

Installation manual
2" front / 1" rear spacer kit
2007 Jeep JK
(4 door only)
Part # 42005

sj121906rev.01

Important customer information:

Tuff Country EZ-Ride Suspension highly recommends that a qualified and/or certified mechanic performs this installation.

If you desire to return your vehicle to stock, it is the customers responsibility to save all stock hardware.

This vehicles reaction and handling characteristics may differ from standard cars and/or trucks. Modifications to improve and/or enhance off road performance may raise the intended center of gravity. Extreme caution must be utilized when encountering driving conditions which may cause vehicle imbalance or loss of control. **DRIVE SAFELY!** Avoid abrupt maneuvers, such as sudden sharp turns which could cause a roll over, resulting in serious injury or death.

It is the customers responsibility to make sure that a re-torque is performed on all hardware associated with this suspension system after the first 100 miles of installation. It is also the customers responsibility to do a complete re-torque after every 3000 miles or after every off road use.

After the original installation, Tuff Country EZ-Ride Suspension also recommends having the alignment checked every 6 months to ensure proper tracking, proper wear on tires and front end components. Tuff Country EZ-Ride Suspension takes no responsibility for abuse, improper installation or improper suspension maintenance.

It is the responsibility of the customer or the mechanic to wear safety glasses at all times when performing this installation.

It is the customers/installers responsibility to read and understand all steps before installation begins. OEM manual should be used as a reference guide.

Make sure to use locktite on all new and stock hardware associated with this installation.

The Tuff Country EZ-Ride Suspension product safety label that is included in your kit box must be installed inside the cab in plain view of all occupants.

Limited lifetime warranty

Notice to all Tuff Country EZ-Ride Suspension customers: It is your responsibility to keep your original sales receipt! If failure should occur on any Tuff Country EZ-Ride Suspension component, your original sales receipt must accompany the warranted unit to receive warranty. Warranty will be void if the customer can not provide the original sales receipt. Do not install a body lift in conjunction with a suspension system. If a body lift is used in conjunction with any Tuff Country EZ-Ride Suspension product, your Tuff Country EZ-Ride Suspension WARRANTY WILL BE VOID. Tuff Country Inc. ("Tuff Country") suspension products are warranted to be free from defects in material and workmanship for life if purchased, installed and maintained on a non-commercial vehicle; otherwise, for a period of twelve (12) months, from the date of purchase and installation on a commercial vehicle, or twelve thousand (12,000) miles (which ever occurs first). Tuff Country does not warrant or make any representations concerning Tuff Country Products when not installed and used strictly in accordance with the manufacturer's instructions for such installation and operation and accordance with good installation and maintenance practices of the automotive industry. This warranty does not apply to the cosmetic finish of Tuff Country products nor to Tuff Country products which have been altered, improperly installed, maintained, used or repaired, or damaged by accident, negligence, misuse or racing. ("Racing is used in its broadest sense, and, for example, without regards to formalities in relation to prizes, competition, etc.) This warranty is void if the product is removed from the original vehicle and re-installed on that or any other vehicle. This warranty is exclusive and is in lieu of any implied warranty of merchantability, fitness for a particular purpose or other warranty of quality, whether express or implied, except the warranty of title. All implied warranties are limited to the duration of this warranty. The remedies set forth in this warranty are exclusive. This warranty excludes all labor charges or other incidental of consequential damages. Any part or product returned for warranty claim must be returned through the dealer of the distributor from whom it was purchased. Tuff Country reserves the right to examine all parts returned to it for warranty claim to determine whether or not any such part has failed because of defect in material or workmanship. The obligation of Tuff Country under this warranty shall be limited to repairing, replacing or crediting, at its option, any part or product found to be so defective. Regardless of whether any part is repaired, replaced or credited under this warranty, shipping and/or transportation charges on the return of such product must be prepaid by the customer under this warranty.

Important information that needs to be read before installation begins:

Tuff Country recommends that a 33x12.50 tire be installed after the completion of the installation. If a larger size tire is installed on your vehicle in conjunction with part # 42005; Tuff Country assumes no liability and the warranty will be VOID.

Before installation begins, Tuff Country EZ-Ride Suspension highly recommends that the installer performs a test drive on the vehicle. During the test drive, check to see if there are any uncommon sounds or vibrations. If uncommon sounds or vibrations occur on the test drive, uncommon sounds or vibrations will be enhanced once the suspension system has been installed. Tuff Country EZ-Ride Suspension highly recommends notifying the customer prior to installation to inform the customer of these issues if they exist.

The stock shocks may be used in conjunction with this front and rear spacer kit.

Special note: Before installation begins, it is the customers/installers responsibility to make sure that all parts are on hand. If any parts are missing, please feel free to call one of our customer service representatives @ (801) 280-2777.

Recommended tools selection;

- Torque wrench
- Standard socket set
- Standard wrench set
- Metric socket set
- Metric wrench set
- Tape measure
- Hydraulic floor jacks

Please follow instructions carefully:

Before installation begins, measure from the center of the hub, to the bottom of the fender well, and record measurements below.

Pre-installation measurements:

Driver side front: _____

Passenger side front: _____

Driver side rear: _____

Passenger side rear: _____

At the end of the installation take the same measurements and compare to the pre-installation measurements.

Post installation measurements:

Driver side front: _____

Passenger side front: _____

Driver side rear: _____

Passenger side rear: _____

Front end installation:

1. To begin installation, block the rear tires of the vehicle so that the vehicle is stable and can't roll backwards. Safely lift the front of the vehicle and support the frame with a pair of jack stands. Place a jack stand on both the driver and the passenger side. Next, remove the front wheels and tires from both sides.

2. Working on the driver side, place a hydraulic floor jack under the front differential. Repeat procedure on the passenger side. Carefully raise up on both hydraulic floor jacks until they come into contact with the front differential.

3. Working on the driver side, remove the lower mounting hardware that connects the stock sway bar end link to the stock lower bracket that is attached to the front axle. Save the stock hardware for later re-installation. Repeat procedure on the passenger side. Let the stock sway bar hang.

Photo # 1

4. Working on the driver side, remove the stock mounting hardware that connects the stock shock into the stock lower mount. Save the stock hardware for later re-installation. Repeat procedure on the passenger side. **Special note: There is no need to remove the shock completely from the vehicle. Keep the stock shock mounted to the stock upper mounting location.**

Photo # 2

4. Carefully lower down on both hydraulic floor jacks until the front coil springs can be removed. Working on the driver side, remove the stock coil spring. Set aside for later re-installation. Repeat procedure on the passenger side. **Special note: Make sure to keep the driver and passenger side coil springs separate from each other. We**

need to make sure that the driver side coil spring gets installed back into the vehicle on the driver side and the same with the passenger side.

Photo # 3

5. Locate the new front coil spring spacers. Working on the driver side, install the new coil spring spacer over the stock bump stop cup. Repeat procedure on the passenger side.

Photo # 4

6. Locate the stock driver and passenger side coil springs that were removed in step # 4. Working on the driver side, install the driver side coil spring into the stock location. Repeat procedure on the passenger side. Carefully raise up on both hydraulic floor jacks until the stock coil springs seat properly into the upper and lower locations.

Photo # 5

7. Locate the stock lower shock mounting hardware that was removed in step # 4. Working on the driver side, install the stock shock into the stock lower mounting location and secure using the stock hardware. Make sure to use thread locker or lockite and torque to **65 ft lbs**. Repeat procedure on the passenger side.

Photo # 6

8. Locate the stock front end link mounting hardware that was removed in step # 3. Working on the driver side, install the stock front sway bar end link into the stock lower mounting location and secure using the stock hardware. Make sure to use thread locker or lock tite and torque to **45 ft lbs**. Repeat procedure on the passenger side.

Photo # 7

9. Carefully remove both hydraulic floor jacks from under the vehicle.

10. Check and double check to make sure that all steps for the front end were performed properly and then check again.

11. Install the tires and wheels and carefully lower the vehicle to the ground.

Congratulations, front end installation complete!

Rear end installation:

12. To begin installation, block the front tires of the vehicle so that the vehicle is stable and can't roll forward. Safely lift the rear of the vehicle and support the frame with a pair of jack stands. Place a jack stand on both the driver and the passenger side. Next, remove the rear wheels and tires from both sides.

13. Working on the driver side, place a hydraulic floor jack under the rear axle. Repeat procedure on the passenger side. Carefully raise up on both hydraulic floor jacks until they come into contact with the rear axle.

14. Working on the driver side, remove the stock mounting hardware that connects the stock shock into the stock lower mount. Save the stock hardware for later re-installation. Repeat procedure on the passenger side. **Special note: There is no need to remove the shock completely from the vehicle. Keep the stock shock mounted to the stock upper mounting location.**

Photo # 8

15. Working on the driver side, remove the lower mounting hardware that connects the stock sway bar end link to the stock lower bracket that is attached to the rear axle. Save the stock hardware for later re-installation. Repeat procedure on the passenger side. Let the stock sway bar hang.

Photo # 9

16. Working on the driver side, remove the stock bolt holding the stock brake line bracket to the side of the stock frame rail. Save the stock bolt for later re-installation. Repeat procedure on the passenger side

Photo # 10

17. Working on the driver side, carefully remove the stock ABS line clip from the bottom side of the stock frame rail. **Special note: Take special care not to damage the ABS line clip during removal. This will need to be re-installed back into the same hole at a later step.** Repeat procedure on the passenger side.

Photo # 11

Special note: If the vehicle that you are working on is a soft top, please follow step # 18 - 23.

Special note: If the vehicle that you are working on is a hard top, please skip to step # 24.

18. Carefully lower down on both hydraulic floor jacks until the rear coil springs can be removed. Working on the driver side, remove the stock coil spring. Set the stock coil spring aside for later re-installation. The stock upper isolator can be removed and discarded. Repeat procedure on the passenger side. **Special note: Make sure to keep the driver and passenger side coil springs separate from each other. We need to make sure that the driver side coil spring gets installed back into the vehicle on the driver side and the same with the passenger side.**

Photo # 12 / coil spring removal

Photo # 13 / isolator removal

19. Locate the new rear coil spring spacers. Also, locate the stock driver and passenger side coil springs that were removed in step # 18. Working on the driver side coil spring, place the new rear coil spring spacer on top of the stock coil spring and install the stock coil spring and new rear coil spring spacer back into the stock location. Repeat procedure on the passenger side. Carefully raise up on both hydraulic floor jacks until the stock coil springs and spacer seat properly into the upper and lower locations.

Photo # 14

20. Working on the driver side, carefully push the stock ABS clip back into the bottom side of the stock frame rail. Repeat procedure on the passenger side. **Special note: Take care not to damage the stock ABS clip during installation.**

Photo # 15

21. Locate the stock brake line hardware that was removed in step # 16. Working on the driver side, re-install the stock brake line bracket to the side of the stock frame rail using the stock hardware. Repeat procedure on the passenger side.

Photo # 16

22. Locate the stock lower shock mounting hardware that was removed in step # 14. Working on the driver side, install the stock shock into the stock lower mounting location and secure using the stock hardware. Make sure to use thread locker or lock tite and torque to **65 ft lbs**. Repeat procedure on the passenger side.

Photo # 17

23. Locate the stock end link mounting hardware that was removed in step # 15. Working on the driver side, install the stock rear sway bar end link into the stock lower mounting location and secure using the stock hardware. Make sure to use thread locker or lock tite and torque to **45 ft lbs**. Repeat procedure on the passenger side.

Photo # 18

Special note: If the vehicle that you are working on is a soft top, please skip to step # 30.

24. Carefully lower down on both hydraulic floor jacks until the rear coil springs can be removed. Working on the driver side, remove the stock coil spring. Set the stock coil spring and the stock isolator aside for later re-installation. Repeat procedure on the passenger side. **Special note: Make sure to keep the driver and passenger side coil springs separate from each other. We need to make sure that the driver side coil spring gets installed back into the vehicle on the driver side and the same with the passenger side.**

Photo # 12 / coil spring removal

Photo # 13 / isolator removal

25. Locate the new rear coil spring spacers. Also, locate the stock driver and passenger side coil spring and the stock driver and passenger isolator that were removed in step # 24. Working on the driver side coil spring, place the new rear coil spring spacer on top of the stock coil spring. Now install the stock isolator on top of the new rear coil spring spacer and install the stock coil spring, new rear coil spring spacer and stock isolators back into the stock location. Repeat procedure on the passenger side. Carefully raise up on both hydraulic floor jacks until the stock coil springs and spacer seat properly into the upper and lower locations.

26. Working on the driver side, carefully push the stock

ABS clip back into the bottom side of the stock frame rail. Repeat procedure on the passenger side. **Special note: Take care not to damage the stock ABS clip during installation.**

Photo # 15

27. Locate the stock brake line hardware that was removed in step # 16. Working on the driver side, re-install the stock brake line bracket to the side of the stock frame rail using the stock hardware. Repeat procedure on the passenger side.

Photo # 16

28. Locate the stock lower shock mounting hardware that was removed in step # 14. Working on the driver side, install the stock shock into the stock lower mounting location and secure using the stock hardware. Make sure to use thread locker or lock tite and torque to **65 ft lbs.** Repeat procedure on the passenger side.

Photo # 17

29. Locate the stock end link mounting hardware that was removed in step # 15. Working on the driver side, install the stock rear sway bar end link into the stock lower mounting location and secure using the stock hardware. Make sure to use thread locker or lock tite and torque to **45 ft lbs.** Repeat procedure on the passenger side.

Photo # 18

30. Carefully remove both hydraulic floor jacks from under the vehicle.

31. Check and double check to make sure that all steps for the rear end were performed properly and then check again.

32. Install the tires and wheels and carefully lower the vehicle to the ground.

Congratulations, rear end installation complete!

Special note: After the completion of the installation, Tuff Country EZ-Ride Suspension recommends taking the vehicle to an alignment shop and having a proper front end alignment performed.

Tuff Country EZ-Ride Suspension recommends that a complete re-torque is done on all bolts associated with this suspension system. It is the customers responsibility to make sure that a re-torque is performed on all hardware associated with this suspension system after the first 100 miles of installation. It is also the customers responsibility to do a complete re-torque after every 3000 miles or after every off road use. Neglect of following these steps could cause brackets to come loose and cause serious damage to the suspension system and to the vehicle.

Tuff Country EZ-Ride Suspension packages (2) sets of instruction sheets with this box kit. (1) is for the installer and (1) is for the customer. The (1) for the customer has some post installation procedure literature and it is the installers responsibility to make sure that the customer receives a copy of the installation manual along with the literature.

If you have any questions or concerns, please feel free to contact Tuff Country or your local Tuff Country dealer.



Photo # 1

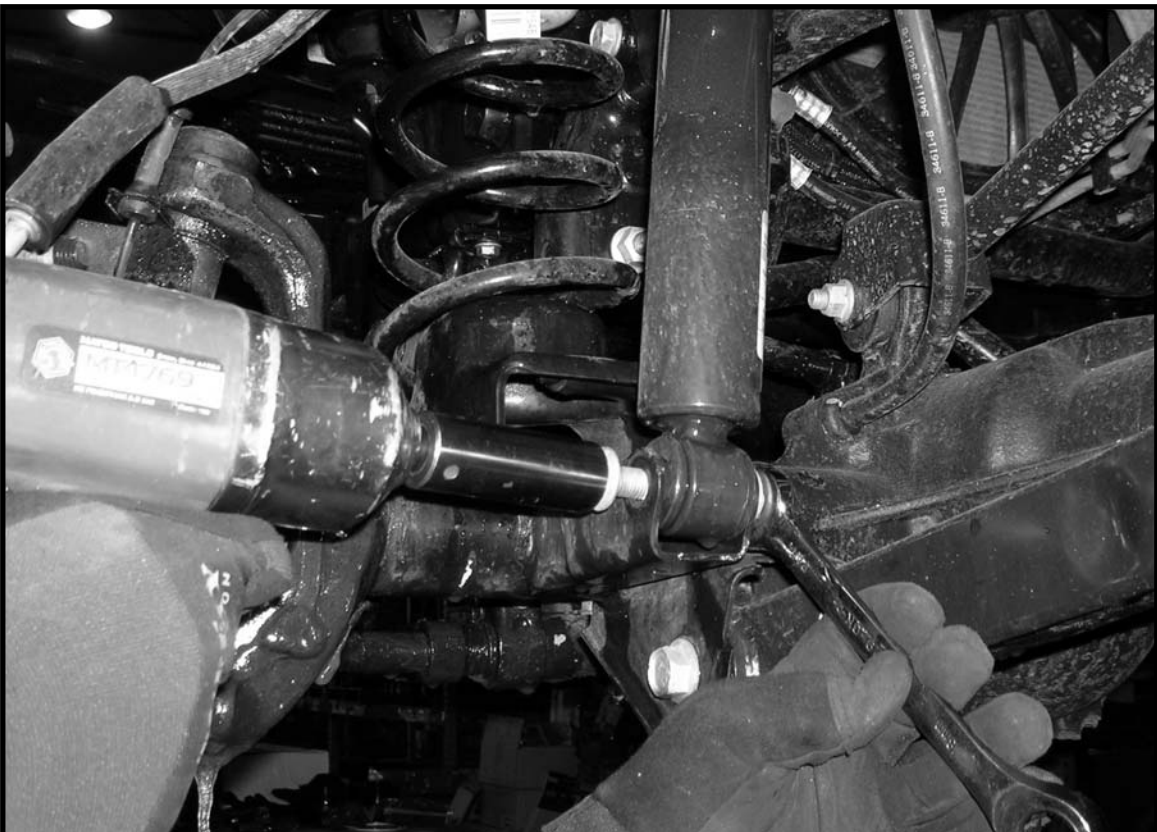


Photo # 2



Photo # 3

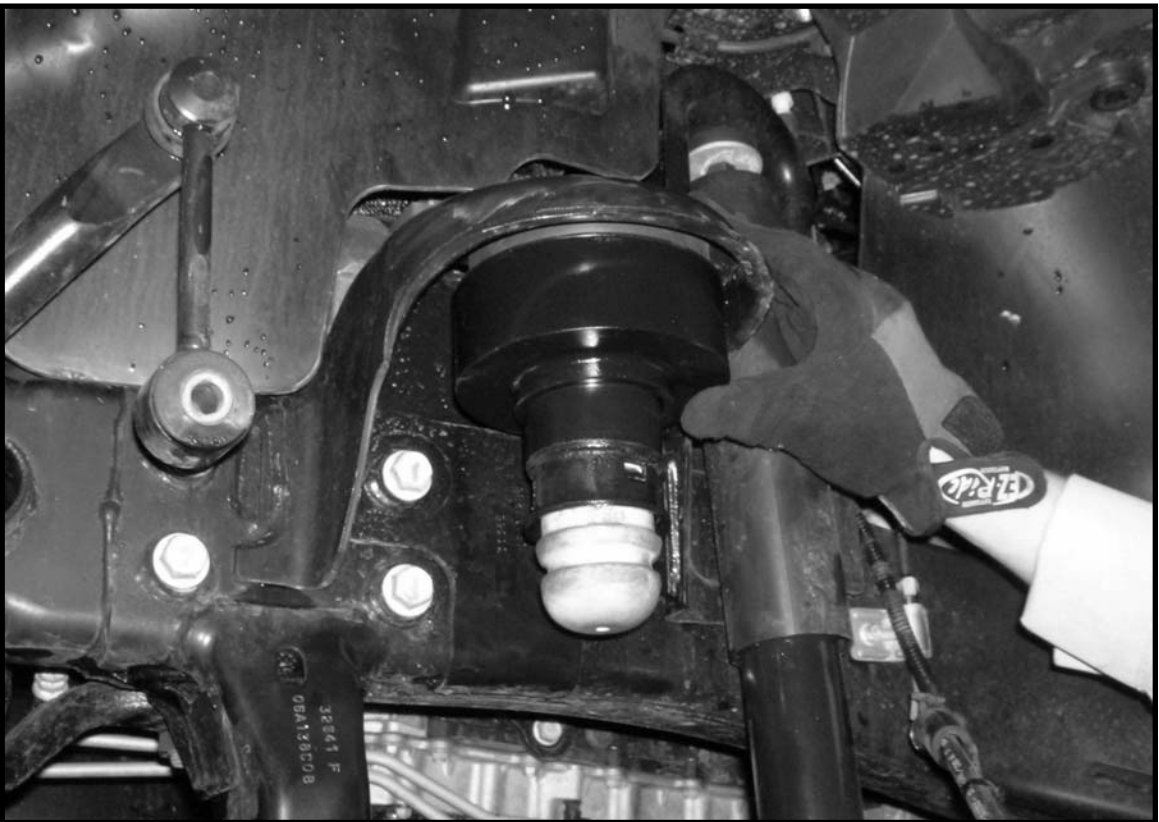


Photo # 4



Photo # 5

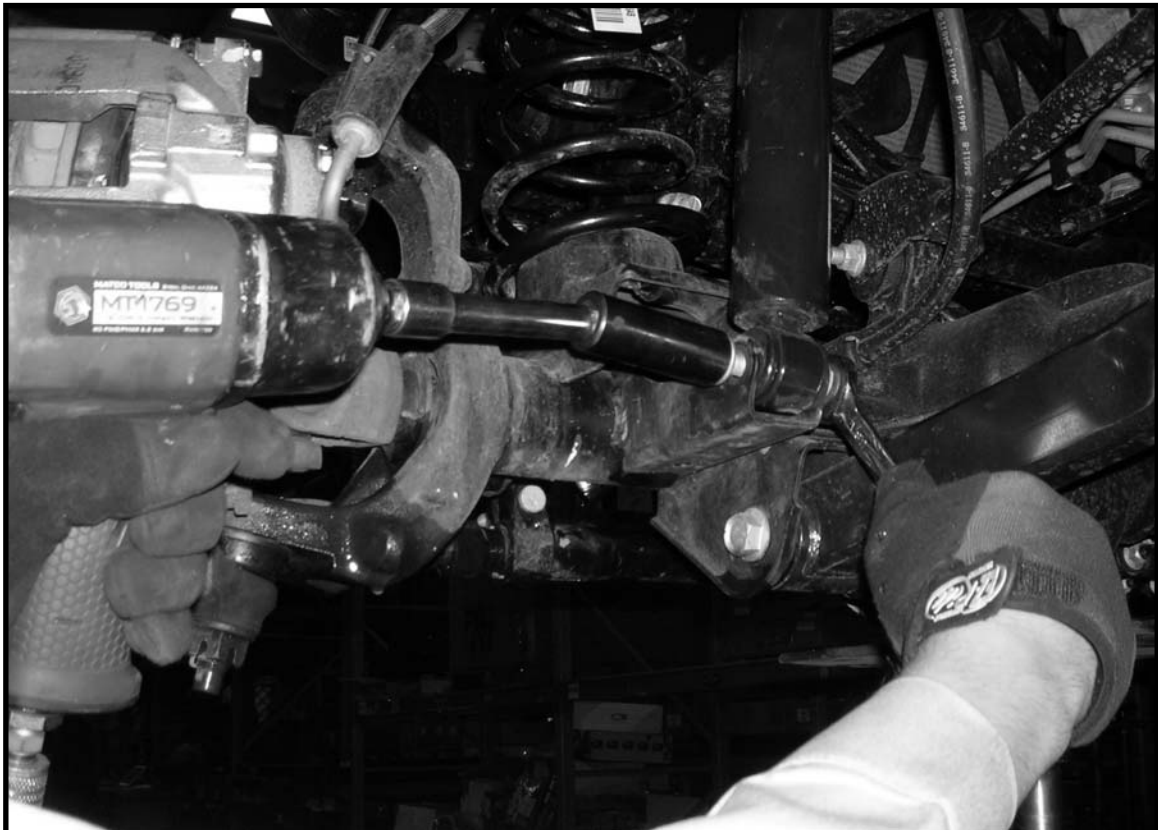


Photo # 6

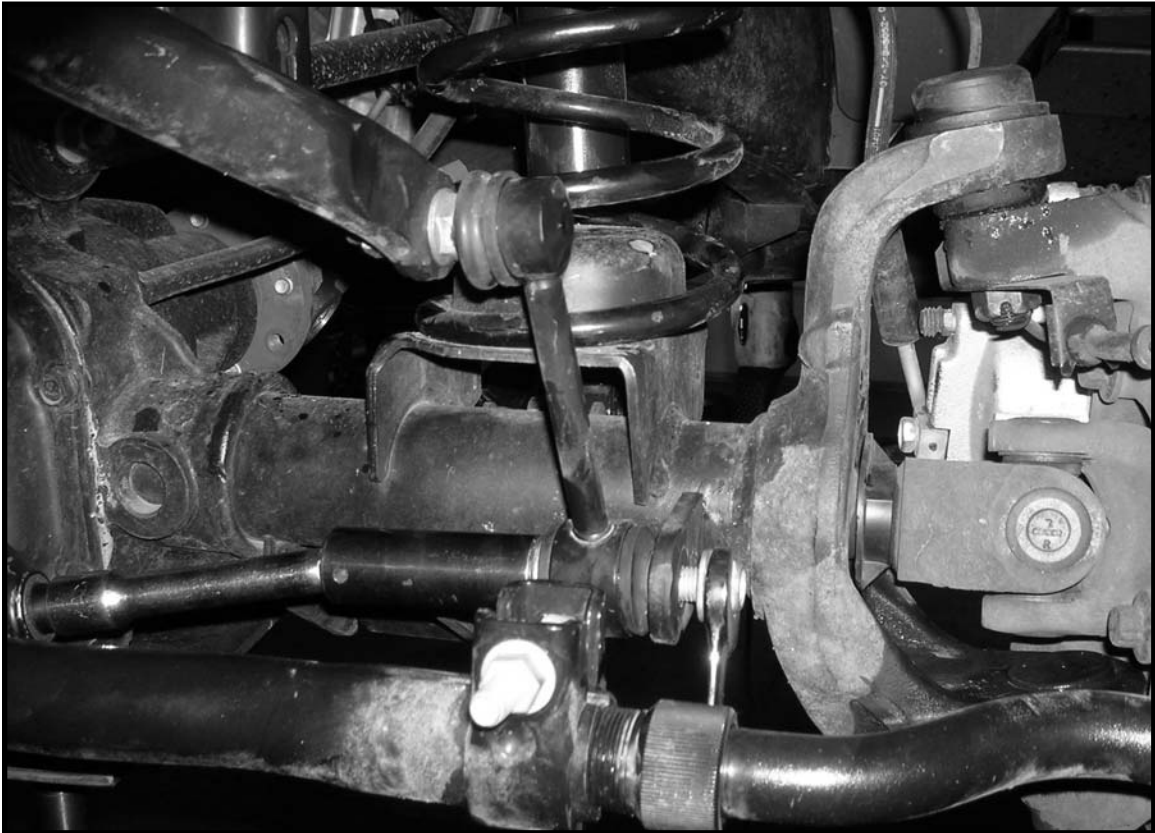


Photo # 7



Photo # 8



Photo # 9



Photo # 10



Photo # 11



Photo # 12



Photo # 13



Photo # 14



Photo # 15



Photo # 16

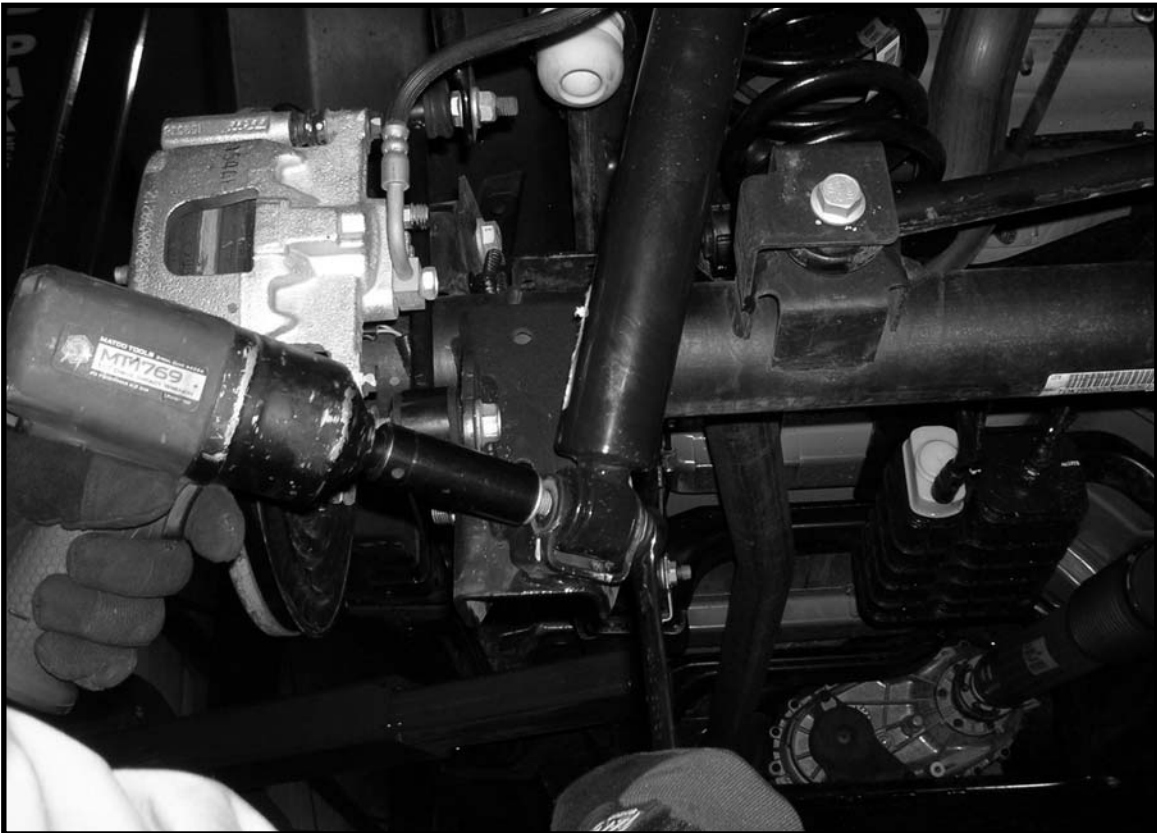


Photo # 17

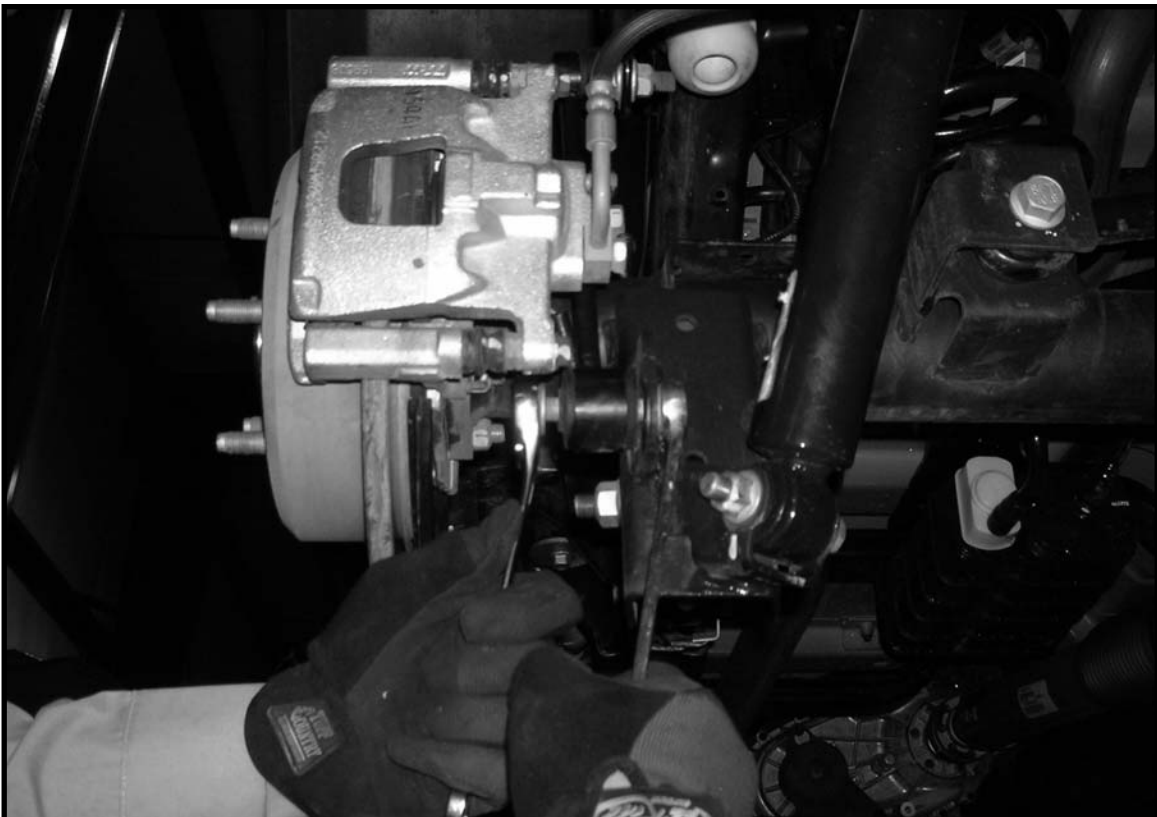


Photo # 18



42005-01 (2)
Front coil spring spacer



42005-02 (2)
Rear coil spring spacer